

President - Bob Fallier Vice Pres - George Michaels
Treasurer - Robert Pawlak Editor - Roland Kelley
Winterfest Chairman - Bob Fallier

Editor - Northeast Ntrak, 41 Easy Street, Lowell, MA 01850-1731, or
e-mail: NortheastNtrak@msn.com Web Site - www.northeastntrak.org



President's Message Bob Fallier

Wow – Almost September Already!

The newsletter is late. My fault. I take full blame.

I'm also trying to fill in space. Your usually prolific writer doesn't really have all that much to write about this month which is why I've been delinquent in getting this to Roland.

So what has been going on? Well for starters the June picnic was very well attended and we had a good discussion on a number of topics. Dues for example. A slight increase this year and another slight increase next year. Admit it guys (and ladies if you are reading this) we pay peanuts for membership. Granted we don't have to pay rent for space to meet and we don't have a club layout to buy things for, but just the same, it would be prudent to be prepared. One of the financial concerns that came up is trailer maintenance and registration. Another is gas money for anyone who hauls the trailer around to shows. We pay the function rooms and audio system during Winterfest as well as some reimbursement for miscellaneous items. We've purchased new throttles for club use and an address changer to make that task easier for people working on decoders during our shows. So there is justification for an increase.

Also brought up during the picnic and business meeting was the issue of a bridge. We currently have two options: The lift bridge that Dan Pawling built and we will continue to use or the non-lift bridge that secures in place instead of a standard four footer. Ducky do and don't stand up too fast. It may not be comfortable but it works. There is a third option which Bob Pawlak has been engineering. If you know Mister Bob then you know that anything he has or is engineering will be far beyond the rest of us when it comes to the fundamental mathematics and calculations of what goes where, how far above the rails the pivot point should be or the rake of the alignment pins. While at Winterfest last January a group of us looked at a motorized lift gate. A wonderful idea, but it simply does not have the finesse required to dependably and accurately align our small tracks time after time. If we were an HO group then it would be fine, but I have to agree that for N scale, it just won't do. So Bob has taken lead on the design and construction of a prototype. Let's give him any and all support. If he asks for something, just do it. Please.

'Tis the season. Train season that is. Not as busy as we've been in the past but we're not willing to be derailed. This past weekend, August 17 & 18, we had a nice layout at the Concord show. The show was very busy and visitor attendance was up 10% over last

year with roughly 1100 tickets sold. Not bad for a hot summer day in August! Unlike Greenberg, this show was for model railroaders. A good number of layouts and a good number of vendors. But no toys and no little screaming kids. There were a lot of kids and I let a little blond girl named Roslyn run my brand new Kato ICE-4. She got to run it even before I did. This really was a good show and I think despite being in August we should keep it on our schedule. Many thanks to everyone who was there and especially Ron Wood for arranging it. We didn't have the trailer this time for lack of a driver. Which brings up two points from the business meeting.

Drivers wanted. Drivers needed. During the meeting it was suggested that we have a list of drivers who could pull the trailer. I also asked for people to commit as far in advance as possible to bringing the trailer to and from shows. Since we did not have a driver available, instead we loaded the yard and club boxes into my small utility trailer. While I don't mind doing that, it does mean that I can't provide much for modules. I will also need to return the yard and club boxes back to the trailer in the next couple of weeks.

The other item I'm reminded of is a "work day". Everyone agreed that a day in August or September would be great. Yea! Lets just go do stuff for us. Whether tuning our own modules or working on club stuff we all said it would be a great idea. Well? August is almost gone. We don't have any shows in September so why not go enjoy a day or a weekend in Amesbury and play/work. Go for lunch, talk, and enjoy a non-show event.

Other newsy stuff.

I've been reelected your president. George Michaels V.P., Bob Pawlak remains the grand poohbah of Winterfest registration and our treasurer, Roland will continue to produce the monthly newsletter. George is also taking on the role of Winterfest Chairman, Jim Nolan contact and solicitor for and of vendors, Jim Pyle ballot counter meister, and I will handle the raffle. Dan Pawling will once again be the mastermind behind the layout plan. Not having my notes handy, I'm sure there are a number of other bits and pieces to pass along to everyone.

The *Stoneman and Turkey Divide Railroad*. Those who were here for the picnic got to peripherally enjoy the new garden railroad. Stop.... Wait. There is

T-TRAK Train Show Schedule 2019 & 2020

If you wish to be part of the T-Trak layout contact Fay Chin Show Coordinator at e-mail nttrak@gmail.com

August 18, 2019, Concord Model Railroad Club,
Everett Arena, Loudon Road, Concord NH

Show 10:00 am to 3:30 pm

September 22, 2019, Old Colony Model Railroad Club,
Taunton Holiday Inn, Taunton MA

Show 10:00 am to 3:30 pm

October 5-6, 2019, Nashua Valley Model Railroad Show, RailFair 2019, Boxborough Regency Hotel,

Show Sat & Sun 10:00 am to 4:00 pm

October 26-27, 2019, Southshore Model Railroad Club, Bare Cove Park, 19 Fort Hill St., Hingham, MA

Show Sat 9:00 am to 4:00 pm , Sun 10:00 am to 4:00 pm

November 23-24, 2019, Greenberg's Train and Toy Show, Shriners Auditorium, Wilmington MA

Show Sat & Sun 10:00 am to 4:00 pm

December 7-8, 2019, NMRA HUB Div Model Train Show, Best Western Royal Plaza Trade Center, Marlboro, MA

Show Sat 10:00 am to 5:00 pm & Sun 10:00 am to 4:00 pm

January 25-26, 2020, Amherst Railway Society Railroad Hobby Show, Eastern States Exposition Fairgrounds, West Springfield MA

Show Sat 9:00am to 5:00pm - Sun 10:00am to 4:00pm

March 7-8, 2020, Southshore Model Railroad Club, 19 Fort Hill St., Hingham, MA

Show 9:00 am to 4:00 pm - Sun 10:00am to 4:00pm

March 28-29, 2020, Greenberg's Train and Toy Show, Shriners Auditorium, Wilmington MA

Show Sat & Sun 10:00 am to 4:00 pm

April ??, 2020, Connecticut Valley Model Railroad Club, Kearsrge Region Middle School, 32 Gile Pond Road, North Sutton, NH

Show 9:00 am to 3 pm

2019-2020 NENTRAK SHOW PARTICIPATION SCHEDULE

September ??-??, 2019 Pepperell Siding Show, new show

Coordinator: John Doehring - 978-433-6337

October 26-27, 2019 - Southshore Model Railroad Club, Bare Cove Park, 19 Fort Hill St, Hingham, MA

Set-up:

Show Sat & Sun 9:00 am to 4:00 pm

Coordinator: Frank Dignan - 508-866-9660

November 23-24, 2019 Great Train Expo, Shriners Auditorium, Wilmington, MA

Set-up: Fri 1:00pm - 5:00pm - Sat 7:30am

Show Sat 10:00am to 4:00pm - Sun 10:00am to 4:00pm

Coordinator: Frank Dignan - 508-866-9660

December 7-8, 2019 - NMRA HUB Division Model Train Show, Best Western Royal Plaza Trade Center, Marlborough, MA

Show Sat 10:00 am to 5:00 pm & Sun 10:00 am to 4:00 pm

Coordinator: Rob Selberg (MaiNetrak)

Jan 24-26, 2020 Winterfest, Springfield, MA Amherst Railway Society - Big Railroad Hobby Show

Big "E" Exposition Center, West Springfield, MA

Set-up: Fri noon to 5:00pm & Sat 7:00am to 9:00am

Show Sat 9:00am to 5:00pm - Sun 10:00am to 4:00pm

Layout Coordinator: Dan Pawling Jr., 617-244-5261

Winterfest Chairman: Bob Fallier - 603-465-3785

March 28-29, 2020 Great Train Expo, Shriners Auditorium, Wilmington, MA

Set-up: Fri 1:00pm to 5:00 pm - Sat 7:30am

Show Sat 10:00am to 4:00pm - Sun 10:00am to 4:00pm

Coordinator: Frank Dignan - 508-866-9660

April ??, 2020 Hooksett Lions Club, Cawley Middle School, Hooksett, NH

Set-up: 8:00am - Show 10:00am to 4:00pm

Coordinator: Russell Putnam - 603-835-6952

Show Dates **Subject to Change**...Check Newsletters for Updates. Please check schedule for errors and send up dates to Roland at: northeastntrak@msn.com Thanks for your help.

no garden out there. Just a jungle full of green stuff. And that friends is fine by me. I'm not a gardener. I like colorful plants but as you've seen by my front garden, it's not something I want out back. Besides I really like to watch trains plowing through the wild ferns and other green stuff (most of the poison ivy is gone). Since June it has expanded just a little, adding an engine shed and a couple of lead tracks. My wife added a "pot" full of ceramic garden gnomes and some nice little details there. My nephew, who helped clear some of the right of way wants to create a Jungle Book scene complete with Mogli and friends.

And what does that have to do with N scale? Just this: a lot of what I've learned while part of NTRAK I've used in building the jungle railroad. Setting a scene, weathering, right-of-way, and what should run with what. In N scale I've done some kit bashing with some success. Enough so that I can enter the Model Contest at Winterfest. Working

with tiny details like shovels and chains and barrels on my minute work train showed me that I can do the same, to a much greater degree, on the same kind of car in G scale. Building a snow plow from a Tichy Trains kit is not a bad way to figure out how to kit bash a box car or caboose into a working G scale plow for real snow when it comes. The downside to G scale: Good golly Miss Molly it ain't cheap. And I could fit 50 N scale jewel cases inside just one LGB car box. Where I'm going to store the growing pile of boxes I don't know.

So what have I been working on for N scale? Not a lot. My DB150 booster for the downstairs layout fruited out just days before Winterfest and went to Digitrax just days after the show. It finally came back in late July. For my birthday last November my wife had ordered a new DCS240 to replace my (continued on page 4)

Digitrax UP5/UR90 Mounting Options by Claus Schlund

At Northeast NTRAK, we use Digitrax as our DCC system. It turns out I also use Digitrax at home. I often bring a 50 foot Loconet cable with me to NTRAK meets so I can run a tethered throttle for the times when I do switching operations on my module.

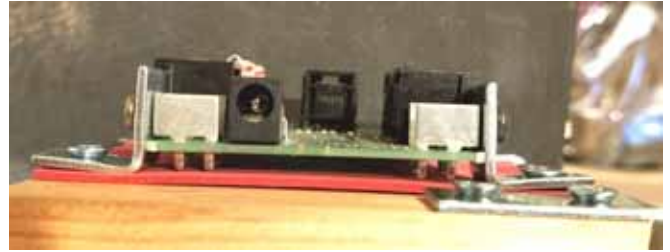
It occurred to me that having a Loconet panel of some sort permanently mounted to my module would be handy, but I wasn't quite clear where to mount it. I looked thru the list of Digitrax offerings, and it seemed either the Digitrax UP5 panel or the Digitrax UR90 panel would be the right product. The UP5 and UR90 are both the exact same size and shape, but the UR90 also can work cordlessly with an Infrared equipped throttle. Unfortunately, from the factory, the Digitrax UP5/UR90 panels are designed to be mounted to the fascia. My module has folding legs, and so this approach was guaranteed to NOT work since the UP5/UR90 would end up right where the module legs have to go! It seemed to me that a leg-mounted approach would work best, so I set about engineering a solution for this.

Since the UP5/UR90 circuit boards have no provision for surface mounting, I brought one with me to my local Home Depot store and started trying things. Everbilt 3/4" steel corner braces seemed like they would do the trick.



Four 3/4 inch corner braces allow the UP90 circuit board to be surface

Four 3/4" corner braces were used along with four #8 split-ring washers. The Digitrax factory supplied screws hold the braces in place. My vision was to then use wood screws to surface-mount this assembly onto a small piece of wood. However, the 3/4 inch corner braces are not what you would call precision bent to 90 degrees - they deviate quite a bit, and I did not want to flex or otherwise distort the flat plane of the circuit board for fear of damaging a soldered connection to a surface-mounted component. After looking and scratching my head, I found some fairly dense 1/16" foam at Michael's (an art supply store). I cut a section of this to the required size, and it did a great job of allowing for the lack of precision in the corner braces. I used #8 by 1/2" Phillips head wood screws to secure everything, being careful to only torque the wood screws as far as necessary for the foam to provide just enough pressure to secure the assembly, but no more.



As you can see, the corner braces are not manufactured a precise 90 degree angle, so some mounting foam (red color in photo) is required to provide some slop to cushion the attachment point.

Lastly, some Everbilt 1 1/2" steel corner braces make it possible to attach this assembly to the module legs.



The entire assembly is ready to be mounted onto the module leg.

Remember that the legs on this module are not typically removed, they are folded under. Since one leg folds over the other, make sure you select the correct side of the correct leg! You will need to check and be sure you have the required clearance for all this to work.



Everything is mounted on the module leg

As I mentioned before, both the UP5 and the UR90 have the exact same mounting geometry, so you can easily substitute one for the other at will. The same basic technique will also work for a Digitrax UP3 panel or a UR91 receiver, but the size is slightly different and so they cannot simply substitute for one another without doing a bit more work.

Annual Business Meeting on June 8, 2019



(continued from page 2)

existing command station. That order was placed two weeks before Digitrax got wiped out by the hurricane. The new DCS240 just arrived on July 26th. I also decided to take apart the aging Arnold Rapido tracks at my station and get busy on a few other scenic changes. The tracks were pulled, new track put down but turnout motors seems to have taken over. Even at night when I could be in the train room working, instead I'm working on the big scale stuff.

Either way it is still model railroading and still fun. That's all for counts!

So what have I been working on? I took a Bachmann log car, stripped it down and weathered it, finishing with debris under the logs. The plastic "logs" looked like logs from a LEGO set. Weathered the heck out of those, too. Much better! Then the Bachmann flat car with donkey engine. The plumbing detail on the donkey engine is excellent. But the cable drums are just molded plastic and are totally non-functional. Never satisfied with what comes out of the box I added a few small details. A derrick made of scrap wood, chains, "cables", wood barrels for boiler water, more chains, scale tools of every sort and a myriad of details that we would never think of in N scale. Then I decided I needed a plow. Yes, G scale can run in the rain and snow, although my two truck Shay is excluded. So I found a caboose on ebay in hopes of using that as a donor. What a wreck it turned out to be. Buyer Beware. I blasted the seller for misrepresentation.

After three hours of fixing it back to running condition it was time to start cutting it apart. Patterned after a typical Russell type plow, it is now functional with an all-aluminum plow blade and vertical throw blade. I tested it on the track today and found only a couple of things to modify before it is operational. Slightly too wide and very slightly too low, otherwise it will work just fine. At the Concord show this past weekend I also found a monster Santa Fe SD45, weighing in at a full ten pounds. That should be sufficient to handle the plow when the snow does come. The engine is almost 15 years old and had never been out of the original wrapper at almost a "give away" price.

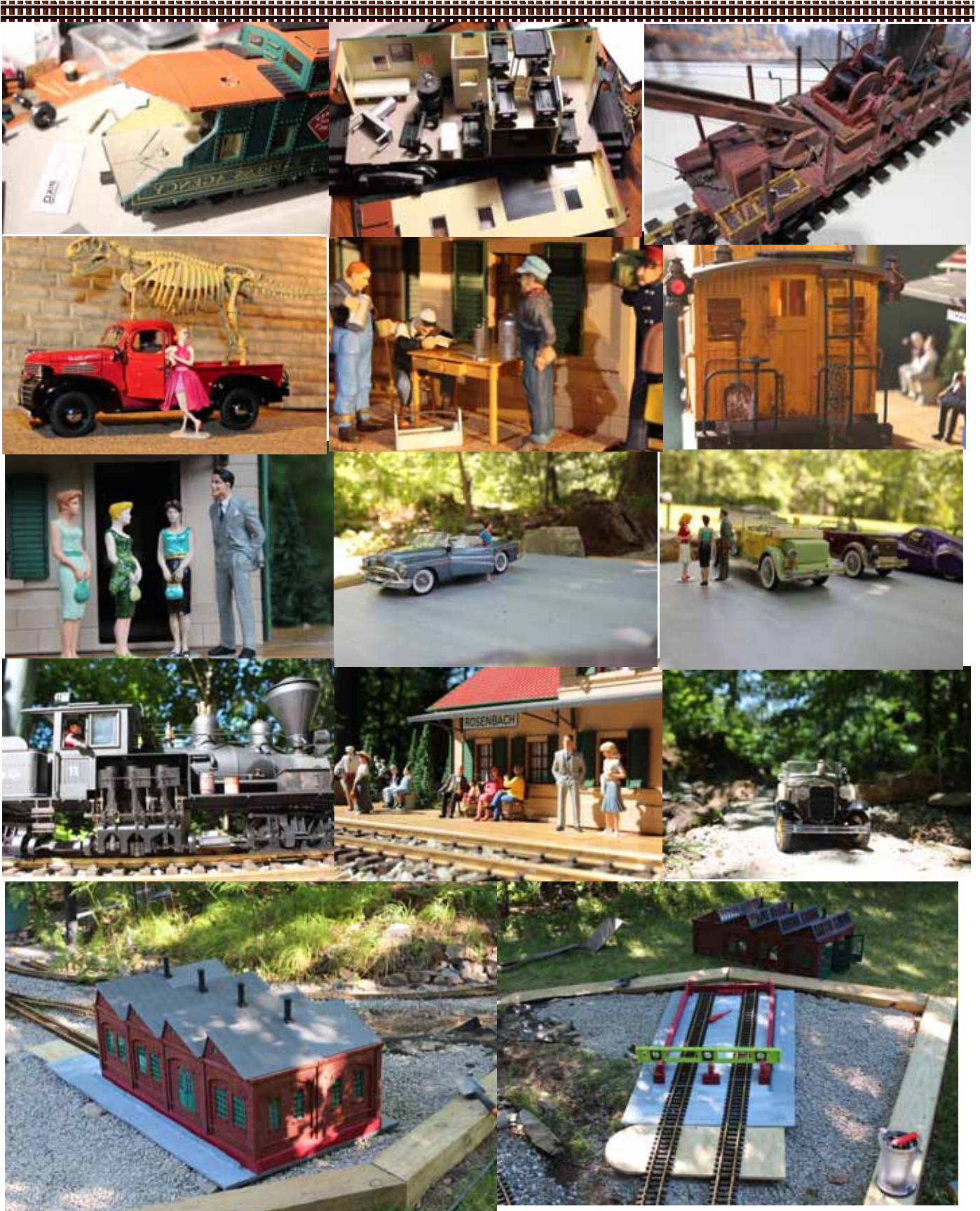
Well that's about it. Next show: Wellisley Community Center.

Welcome to our New Member

Alexander Portelli
188 Willis Road
Sudbury, MA 01776-1328

Phone: 805-252-8381
Hollie.haycock@yahoo.com

Been in the hobby for about 7 years



**A few more Stoneman & Turkey Divide Pictures for you.
by Bob Fallier**