



December 2016
NEWSLETTER

President - Geof Smith Vice Pres - Bob Fallier
Treasurer - Robert Pawlak Editor - Roland Kelley

Editor - Northeast Ntrak, 41 Easy Street, Lowell, MA 01850-1731, or
e-mail: NortheastNtrak@msn.com Web Site - www.northeastntrak.org



President's Message
Geof Smith

HAPPY HOLIDAYS



When's the next train?

We've had two shows since the November newsletter: a show in Wellesley, where Carl Mesrobian, George Michaels, Jim Pyle, Dan Pawling and Frank Dignan came up with a small, but well received layout. It's hard to imagine a layout featuring only six modules (plus the yard and bridge), but they made it work! And then, the Greenberg show! Frank Dignan did a masterful job coordinating this show – always one of our biggest and most popular. I was away in San Antonio, Texas for the weekend, but a special thanks to everyone who made it a success!

Two shows in one month, plus Ttrak displays at each. Who says model railroading is a dying hobby? But it wouldn't be a President's Message without an appeal, so here it is: Carl Mesrobian has for three years carried the bridge module that permits us to walk upright into the middle of the layout, the yard modules, and club boxes to almost every show. Oh, and if he had room, he'd bring his own module too. He then goes home and unloads all of this by himself and carries it all up to his attic. That's some pretty good aerobic exercise, but . . . We've divvied up the club boxes to reduce that portion of the load, and to George and John who each took one, thank you! But now we need someone to step up and take the yard modules. Being their landlord for three years on behalf of all of us is long enough. These yard modules are neatly built so that they take a minimum of room and are easy to carry.

I want to ask everyone to consider taking them with them, and I especially want those of you who do not bring a module but want to run trains at shows to consider this request. It's time to step up and help your club out. What do you say?

So when's the next train? How about we lend a hand to our friends from Maine and Ttrak'ers on December 3-4 at the HUB Division show in Marlboro? And then really get our modules show-worthy for the big event: Winterfest in Springfield, January 28-29.

Save me a seat!

Winter cometh to New England, and thus comes "Winterfest 2017"!

Northeast NTrak will once again be the host for New England area NTrak groups and members at the Amherst Railway Society "Winterfest" show, January 27-29, 2017, in Springfield, Ma. This is the largest model railroad show in New England and typically over 20,000 guests will be in attendance.

We'll have members from all 6 New England states, New York, New Jersey, Montreal, and special guests from Europe. With such a very diverse group of NTrak members, it's always a pleasure to see the comradery and cooperation that all members present. Several of our guests represent Swiss NTrak groups and it's always a pleasure to share their often unique ideas and perspectives on N scale railroading.

We will have two separate NTrak layouts, both approximately 30'x80' plus a T-Trak layout. Set up will be on Friday morning, with 3 Clinics presented in the evening after registration. The show will be open to the public on Saturday and Sunday. Saturday night will be our 23rd annual banquet and awards at the Hilton Garden Inn, where many of our members and corporate supporters also stay. Our special guest and keynote speaker will be Bill Schneider from Rapido Trains and his presentation should be as unique as the company he represents.

Reminders:

- Mention that you are a member of Northeast NTrak when you book your hotel rooms.
- Spruce up your modules, check your connectors.
- Don't forget to Register On-Line **and** also Print & Mail the hard copy with your check..
- Contact Dan Pawling, John Bingel, or Fay Chin with your module information

Hope to see you all there. Happy Rails, Bob Fallier
Northeast NTrak Winterfest Chairman

T-TRAK Train Show Schedule - 2016 & 2017

If you wish to be part of the T-Trak layout contact Fay Chin Show Coordinator at e-mail faywchin@gmail.com

August 21, 2016, Concord Model Railroad Club, Everett Arena, Loudon Road, Concord NH

Show 10:00 am to 3:30 pm

September 25, 2016, Old Colony Model Railroad Club, Taunton Holiday Inn, Taunton MA

Show 10:00 am to 3:30 pm

October 2, 2016, Peperell Siding Model Railroad, Varnum Brook Elem. School, 10 Hollis St., Pepperell MA

Show 10:00 am to 4:00 pm

October 8, 2016, North Shore Model Railroad Club, American Civic Center, Main St., Wakefield MA

Show 10:00 am to 3:00 pm

October 29-30, 2016, Southshore Model Railroad Club, 19 Fort Hill St., Hingham, MA

Show Sat & Sun 10:00 am to 4:00 pm

November 5, 2016, Wellesley Community Train Show, 219 Washington St., Wellesley, Ma

Show 10:00 am to 3:00 pm

November 6, 2016, Metro South Train Show, Temple Beth, 671 North Main St., Randolph, MA

Show 10:00 am to 4:00 pm

November 19-20, 2016, Greenberg's Train and Toy Show, Shriners Auditorium, Wilmington MA

Show Sat & Sun 10:00 am to 4:00 pm

December 3-4, 2016, NMRA HUB Div Model Train Show, Best Western Royal Plaza Trade Center, Marlboro, MA

Show Sat & Sun 10:00 am to 5:00 pm

January 28-29, 2017, Amherst Railway Society Railroad Hobby Show, Eastern States Exposition Fairgrounds, West Springfield MA

Show Sat 9:00am to 5:00pm - Sun 10:00am to 5:00pm

February 11-12, 2017, American Heritage Museum, 33 Marrett Rd., Lexington MA

Show Sat 10:00am to 4:30pm - Sun noon to 4:00pm

March 11-12, 2017, Southshore, 19 Fort Hill St., Hingham, MA

Show

March 18-19, 2017, Greenberg's Train and Toy Show, Shriners Auditorium, Wilmington MA

Show Sat & Sun 10:00 am to 4:00 pm

April 2017, NMRA Spring Training, TBD

April 23, 2017, Hooksett Lions Model Train Show, Crawley Middle School, Hooksett NH

Show 10:00 am to 4:00 pm

2016-2017 NENTRAK SHOW PARTICIPATION SCHEDULE

October 2, 2016 Pepperell Siding Show, Varnum Brook Elementary School, Pepperell, MA

Set-up: 7:00am - Show 10:00am to 4:00pm

Coordinator: John Doehring - 978-433-6337

November 19-20, 2016 Great Train Expo, Shriners Auditorium, Wilmington, MA

Set-up: Fri 1:00pm - 5:00pm - Sat 7:30am

Show Sat 10:00am to 4:00pm - Sun 10:00am to 4:00pm

Coordinator: Frank Dignan - 508-866-9660

December 3-4, 2016 - NMRA HUB Division Model Train Show, Best Western Royal Plaza Trade Center, Marlborough, MA

Coordinator: Rob Selberg (MaiNetrak)

Jan 28-29, 2017 Winterfest, Springfield, MA Amherst Railway Society - Big Railroad Hobby Show

Big "E" Exposition Center, West Springfield, MA

Set-up: Fri noon to 5:00pm & Sat 7:00am to 9:00am

Show Sat 9:00am to 5:00pm - Sun 10:00am to 5:00pm

Layout Coordinator: Dan Pawling Jr., 617-244-5261

Winterfest Chairman: Bob Fallier - 603-465-3785

Feb 11-12, 2017 National Heritage Museum, Lexington, MA

Set-up: Fri 1:00pm - 4:30pm & Sat 7:30am to 10:00am

Show Sat 10:00am to 4:30pm - Sun noon to 4:00pm

Coordinator: Bob Pawlak - 781-862-2485

March 18-19, 2017 Great Train Expo, Shriners Auditorium, Wilmington, MA

Set-up: Fri 1:00pm to 5:00 pm - Sat 7:30am

Show Sat 10:00am to 4:00pm - Sun 10:00am to 4:00pm

Coordinator: Frank Dignan - 508-866-9660

April 23, 2017 Hooksett Lions Club, Cawley Middle School, Hooksett, NH

Set-up: 8:00am - Show 10:00am to 4:00pm

Coordinator: Geof Smith - 603-762-1874

Show Dates Subject to Change...Check Newsletters for Updates. Please check schedule for errors and send up dates to Roland at: northeastntrak@msn.com Thanks for your help.

MaiNe TRACK

Nov. 7, 2015, Auburn Middle School, 38 Falcon Dr., Auburn, ME Set-up 8am Layout 8x16 ft.

Dec 4-6, 2015 Hub Division Model Train Expo, 181 Boston Post Rod, Marlborough, MA Set-up Friday 3pm 12x24 ft layout to include 16 ft of Northeast NTRAK straight modules (see Hub Division web site for Hotel info and discounts).

Jan 29-31, 2016 Winterfest at the Big E (details depending on Layout coordinators needs)

Apr 23, 2016 Mount Ararat High School, 73 Eagles Way, Topsham, ME Set-up 8am Layout 12x20 ft.

***For the 2 Maine shows contact us ahead of time as we try to meet for breakfast. Times and locations of that may change.



Groveton, NH

"I JUST WANT IT TO LOOK LIKE NOTHING ELSE IN THE WORLD...
AND IT SHOULD BE SURROUNDED BY A TRAIN."

WALT DISNEY

**When a trip to Walt Disney World is about
the Trains and not the Mouse
by Bob Fallier**

In mid-September my wife Diane and I headed off to Disney World again for the annual Carolwood Historical Society "UnMeeting". What is the Carolwood Historical Society, and what is an UnMeeting you might ask?

Well as you may know, it didn't really start with a mouse. In fact, it began with a rabbit. Oswald the Lucky Rabbit. Unfortunately Walt Disney lost the ownership rights to Oswald to a New York firm. Despondent over the unexpected loss of Oswald, he and his wife Lillian rode the train back to California. Walt began to draw Mortimer. Lillian didn't particularly like the name and suggested "Mickey" instead. The rest of course is history as most know it. By the time they were back in California, Mickey Mouse had been born.

But it is fair to say, that it really did start with a train. Trains were a pastime and a passion for Walt Disney long before Disneyland opened in July 1955. In fact, several years earlier Walt Disney had his Carolwood Pacific Railroad running around his property in Holmby Hills, Hollywood, California. He named the railroad the Carolwood Pacific because he lived on Carolwood Drive, and his first 1/8th scale live steam engine was named "Lilly Belle" after his wife Lillian.

Among the many people who were part of the expanded Disney family in those pre-Disneyland days, was Roger Broggie. Master machinist, inventor, and Disney Legend. In fact one of the steam engines that circumnavigates Walt Disney World bears his name. Other engines running at WDW are "Lilly Belle", "Walter E. Disney", and "Roy O. Disney". It is the last of these about which the UnMeeting was focused this year.

A "Century of Service" Celebration...

The "Roy O. Disney" was found in Mexico in 1969 by Roger Broggie (then VP & general manager) and Earl Vilmer, along with four other steam engines that had been left to rust. Arranging to ship them back to the Tampa Ship Repair & Dry Dock Co., Florida, they were fully restored and returned to full operation as you see them today. The four Baldwin engines were rebuilt and converted to burn oil instead of coal, but the fifth, a Pittsburg Locomotive & Car Works engine, was deemed to have too many problems and later sold. Named after Walter's older brother Roy, the Baldwin 4-4-0 is scarlet

red and green, with bright gold trim and white rimmed wheels. This year celebrates the 100th birthday of that engine and on hand for the special event was Roy P. Disney, grandson of Roy O. Disney.

Before the park opened to the general public on Friday morning, Society members met at the Main Street Station and took the first train around the park, stopping before arriving at the Fantasyland station and then backing into the (rectangular) roundhouse, leaving our car and the engine outside to bask in the early morning sun.



Michael Broggie (L), and Roy P. Disney (R)

We celebrated the event with the roundhouse crew, engineers, firemen, managers, executives, and Carolwood Society members from across the country. The early morning event was a celebration of not only the engines birthday, but recognition of the men recruited 40+ years ago to restore it. And it was a celebration of the hard work that has kept steam alive and well at all the Disney parks.

Below is the ribbon cutting with Sharon Broggie looking on from the cab as Roy and Michael make the cut. Holding the ribbon are a Disney Ambassador Caitlin Busscher, Dan Cockerell, VP Magic Kingdom, and Joe Bopp (WDW railroad engineer holding the microphone).





The Carolwood Historical Society was started by Michael and Sharon Broggie in an effort to preserve Walt's private railroad and to keep the steam trains rolling as Walt would have wanted. The only requirement for membership: When in a Disney park, *Ride the Trains*.

Later at Disney University, the Society members took part in a lively discussion between Michael and Roy.



Below: copy of the original art, signed by Rick Lynch (artist), Joe Bopp, Michael Broggie and Roy Disney



Why an "UnMeeting". As Sharon and Michael said, we've all attended enough boring meeting in our careers. So they created the annual UnMeeting. The Gathering in the "Carolwood Room" at the Wilderness Lodge, this is a time to get together, talk, have munchies, and whatever fun things happen to come up.

This year included a presentation by three gentlemen, all much younger than most of us, who have been extremely influential in the hands-on restoration of steam engines across the United States. These included Joe Darby, who among other accomplishments spent two years as a volunteer at the Tennessee Valley Railroad Museum assisting in the restoration of ex-Southern Railway 4501. Also presenting was Jason Sobczynski who has been passionately involved with historic railway preservation since 1992. He has contributed heavily to the restoration of 12 steam locomotives in the US. He acted as Co-Project Manager of the Southern 4501 and as primary contractor of operation and maintenance on NKP 765. And then we played a bit of Railroad Trivia. Below Joe and Michael judging the answers in the Carolwood Room



On Sunday morning we gathered again for an early breakfast and then walked the abandoned Disney Fort Wilderness Railroad right-of-way with two of the former engineers who pointed out a number of long gone points of interest.

Coming around the bend near the old station. Some of the original ties still remain.





Below, Joe Bopp and several members before taking the first train to the birthday celebration

The Carolwood Room at the Wilderness Lodge.



Two weeks prior to the grand opening of the park. Walt Disney, Engineer No. 1, and a young Michael Broggie on the first train run at Disneyland, July 5th, 1955, two weeks prior to the grand opening of the park on July 19th.



The next time you visit Walt Disney World, walk around inside the station and take a few minutes to read the posters, captions, and notes about Walt Disney's railroad and the people who helped make it happen.



Broggie earned an MBA and a doctorate in Marketing - summa cum laude - at Pacific University, a BA in Communications from California State University, and an AA in Journalism - with honors. He is a veteran of the [United States Air Force](#), where he served in the Aerospace Medical Command.

In 2010, he was awarded an Honorary Diploma by Rim of the World High School, where his family annually sponsors music scholarship awards to a graduating boy and girl in memory of his mother, Thelma C. Broggie, who was a concert violinist.

On behalf of the model railroad industry, he appeared in 30 cities as the featured presenter of "Walt Disney's Railroad Story" on a national tour with the "World's Greatest Hobby".

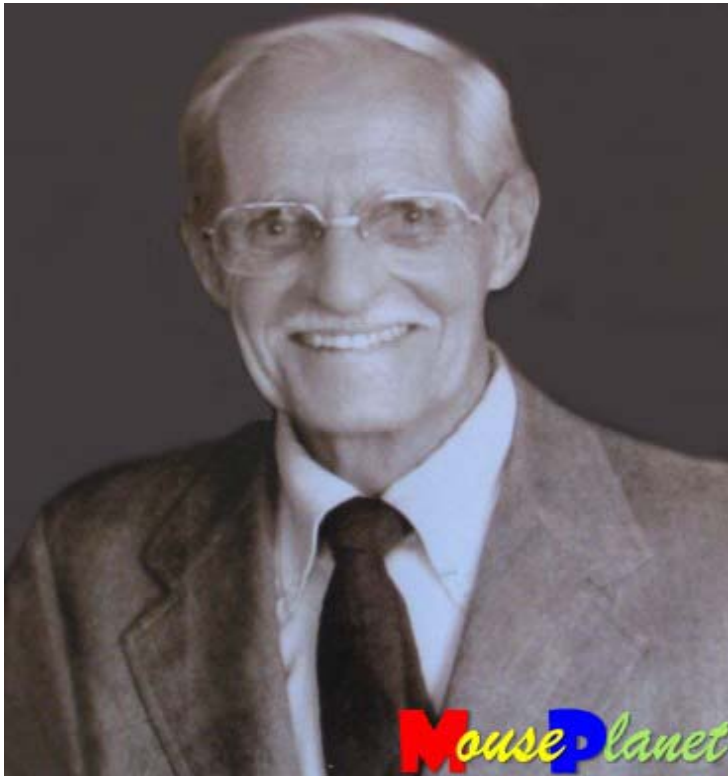
With his wife Sharon, he is co-founder and Chairman of The Carolwood Society and Carolwood Foundation, which operates Walt Disney's Carolwood Barn Museum in Griffith original cars can be seen in the Carolwood Room.



Most people just zip right through on their way in and out of the park, but there is a lot of history on those walls.

Park, on behalf of Walt Disney's family. He has also authored several books including: *"Air Force One: The Final Mission"*, the history of the Presidential Boeing 707 (2006), *"Walt Disney's Railroad Story"*, awarded the Benjamin Franklin Gold Medal for Best Biography (1998), among several others.

Roger E. Broggie, was the head of Walt Disney Studio's machine shop. As a small child, Michael Broggie got to ride on Walt Disney's backyard 1/8-scale model [Carolwood Pacific Railroad](#), which his father helped to build. Two of those original cars can be seen in the Carolwood Room.



Roy Patrick Disney, grandson of Walt Disney Studios founder Roy O. Disney and great nephew of Walt Disney, received his degree in Communications from St. Mary's College in 1979. Roy worked in Hollywood on a number of non-Disney productions. He joined the Disney Company in 1984 starting as an editor for the Disney Channel and later as an Imagineer in Research and Development, leaving in 1993 to found his own investment company.

He has competed in 20 Transpacific Yacht Races, breaking elapsed time records twice. He has also competed in the US Olympic Trials and the America's Cup.

A mouse may have made it popular, but without the **trains**, the World of Disney would have never happened.
Bob Fallier

Winter cometh to New England, and thus comes "Winterfest 2017"!

Northeast NTrak will once again be the host for New England area NTrak groups and members at the Amherst Railway Society "Winterfest" show, January 27-29, 2017, in Springfield, Ma. This is the largest model railroad show in New England and typically over 20,000 guests will be in attendance. We'll have members from all 6 New England states, New York, New Jersey, Montreal, and special guests from Europe. With such a very diverse group of NTrak members, it's always a pleasure to see the comradery and cooperation that all members present. Several of our guests represent Swiss NTrak groups and it's always a pleasure to share their often unique ideas and perspectives on N scale railroading.

We will have two separate NTrak layouts, both approximately 30'x80' plus a T-Trak layout. Set up will be on Friday morning, with 3 Clinics presented in the evening after registration. The show will be open to the public on Saturday and Sunday. Saturday night will be our 23rd annual banquet and awards at the Hilton Garden Inn, where many of our members and corporate supporters also stay. Our special guest and keynote speaker will be Bill Schneider from Rapido Trains and his presentation should be as unique as the company he represents.

Reminders:

- Mention that you are a member of Northeast NTrak when you book your hotel rooms.
- The NTrak rate at the Hilton Garden Inn is \$103 plus tax.
- Dinner selections are Sirloin with mushroom demi glaze or Chicken Francoise. The prices are the same as last year: \$35 as indicated in the On-Line Registration Form.
- Spruce up your modules, check your connectors.
- Don't forget to Register On-Line **and** also Print & Mail the hard copy with your check.
- Contact Dan Pawling, John Bingel, or Fay Chin with your module information
- All private modules **MUST** be registered. Club owned modules are not eligible for awards. See the Module Registration form for additional information.

Hope to see you all there.

Happy Rails,
Bob Fallier

Northeast NTrak Winterfest Chairman